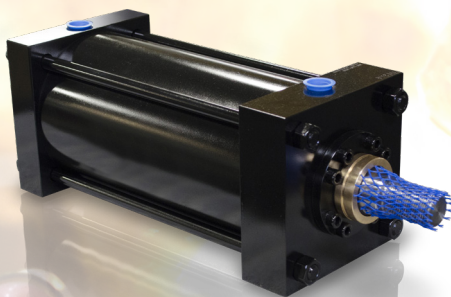
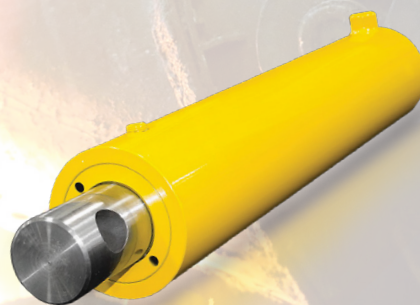


**Your Cylinder Source<sup>®</sup>**

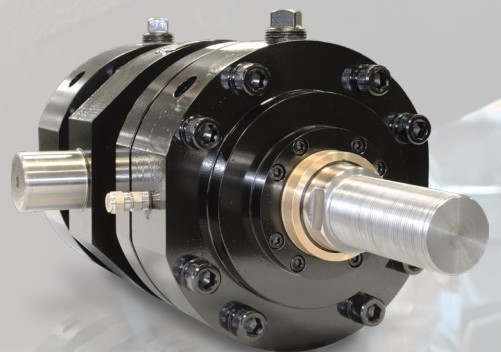
**TIE ROD  
CYLINDERS**



**WELDED  
CYLINDERS**

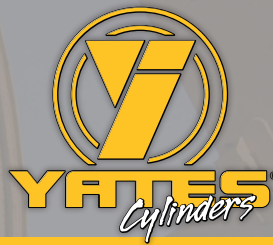


**MILL DUTY  
CYLINDERS**





Please visit:  
yatesind.com



After hours, call:  
1.800.340.6024

## Your Cylinder Source®

### TIE-ROD CYLINDERS

**“H6” Hydraulic Heavy Duty:**

- JIC-NFPA Interchangeable, pressures up to 3,000 PSI hydraulic, bore sizes available from 1.5" - 24", 20 mounting styles.

**“A4, H4, L4” Pneumatic Heavy Duty (steel): Hydraulic Medium Duty, Pneumatic Permanently Lubricated:**

- JIC-NFPA interchangeable, pressures up to 250 PSI pneumatic or 1,500 PSI hydraulic, bore sizes available from 1.5" - 20", 23 mounting styles.

**“A2, H2” Pneumatic (Aluminum), Hydraulic Light Duty (Aluminum):**

- JIC-NFPA interchangeable, pressures up to 250 PSI pneumatic or 400 PSI hydraulic, bore sizes available from 1.5" - 8", 20 mounting styles.

### MILL DUTY CYLINDERS

**“MH” Hydraulic Heavy Duty:**

- Built tough to handle almost any application, pressures up to 3,000 PSI hydraulic, bore sizes available from 2" - 8", 8 mounting styles.

**“MP” Pneumatic Heavy Duty:**

- Built to cover most mill duty pneumatic application, pressures up to 250 PSI pneumatic, bore sizes available from 2" - 8", 8 mounting styles.

### WELDED CYLINDERS

**“WS” Hydraulic Severe Duty :**

- Specifically engineered to withstand the most extreme applications, pressures up to 3,000 PSI hydraulic, bore sizes available from 4" - 12", 9 mounting styles.

**“WH” Hydraulic Heavy Duty:**

- OEM, replacement cylinders, pressures up to 3,000 PSI hydraulic, bore sizes available from 1.5" - 8", 9 mounting styles.

**“WM” Hydraulic Medium Duty:**

- OEM, replacement cylinders, pressures up to 2,500 PSI hydraulic, bore sizes available from 1.5" - 6", 9 mounting styles.

**“WP” Pneumatic Heavy Duty:**

- Replacement cylinders, pressures up to 250 PSI pneumatic, bore sizes available from 1.5" - 6", 9 mounting styles.

### ACCESSORIES

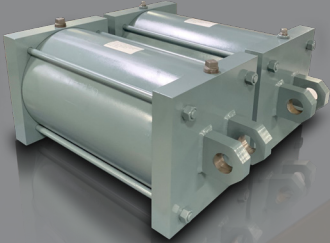
- Rod Clevis • Rod Eye • Pivot Pins • Clevis Brackets
- Self-aligning Rod End Couplers • And much more

### YATES INDUSTRIES ALSO PROVIDES:

- Bellow-style rod boots
- Air/oil intensifiers
- Cylinders with linear displacement transducers
- Cylinders with proximity switches
- Tandem cylinders
- All stainless steel cylinders
- Cylinders with special plating & painting
- Special cylinders per customer prints & specifications
- Back-to-Back Cylinders
- Cylinder Seal Kits
- Online Configurator

### YATES INDUSTRIES REPAIR DEPARTMENT

- The Midwest's largest and most complete repair facility
- Repair all makes, all models, all sizes, Big Bore specialist 60"+
- In-house honing department, machining department, welding department & seal department
- Large inventory: seals, honed tubing, hardened chrome plated rod material, cast iron and cold roll bar stock
- 24-hour emergency service



YATES INDUSTRIES IS A MEMBER  
OF THE NATIONAL FLUID POWER  
ASSOCIATION

**Yates Industries, Inc.**  
23050 E. Industrial Dr.  
St. Clair Shores, MI 48080  
ph: 586.778.7680  
fax: 586.778.6565  
sales@yatesind.com

**Yates Cylinders Alabama**  
55 Refreshment Place  
Decatur, AL 35601  
ph: 256.351.8081  
fax: 256.351.8571  
decatur@yatesind.com

**Yates Cylinders Georgia**  
7750 The Bluffs  
Austell, GA 30168  
ph: 678.355.2240  
fax: 678.355.2241  
salesga@yatesind.com

